



# THE CLOISTER

PALGRAVE GARDENS, MARYLEBONE

Price on application



A modernised apartment moments from the famous Regents Park. Offering high specification features such as a 24h Concierge, Secure underground parking, communal gym and swimming pool exclusively for residents only.

## **The Cloister**

106 Great Portland Street, London, W1W 6PF  
T. +44 (0)20 7436 6210 F. +44 (0)20 7436 7261  
E. [info@thecloister.co.uk](mailto:info@thecloister.co.uk) W. [www.thecloister.co.uk](http://www.thecloister.co.uk)  
Head Office, 64 Knightsbridge, London, SW1X 7JF



# PALGRAVE GARDENS, MARYLEBONE

Price on application

A modernised 3 bedroom apartment overlooking the beautiful communal gardens of this newly constructed landmark development moments from the famous Regents Park and Baker Street.

Finished to an high standard this apartment offers a large master bedroom with an en-suite, two further bedrooms and a family shower room. Also entails an bright open plan reception area with a balcony as well as a fully fitted kitchen.

Offering high specification features the property benefits from a 24 hour concierge and a secure underground parking. This development also boasts the use of a communal gym and swimming pool exclusively for the residents only.

#### LOCAL AMENITIES:

The building is located moments away from the boutique shops and bustling cafes and restaurants of the popular Regents Park.

#### LOCAL TRANSPORT LINKS:

Public transport links are included Marylebone station (Bakerloo), Baker Street Station (Bakerloo, Hammersmith and City Line) and Edgware Road (District, Hammersmith City and Circle Line)

---

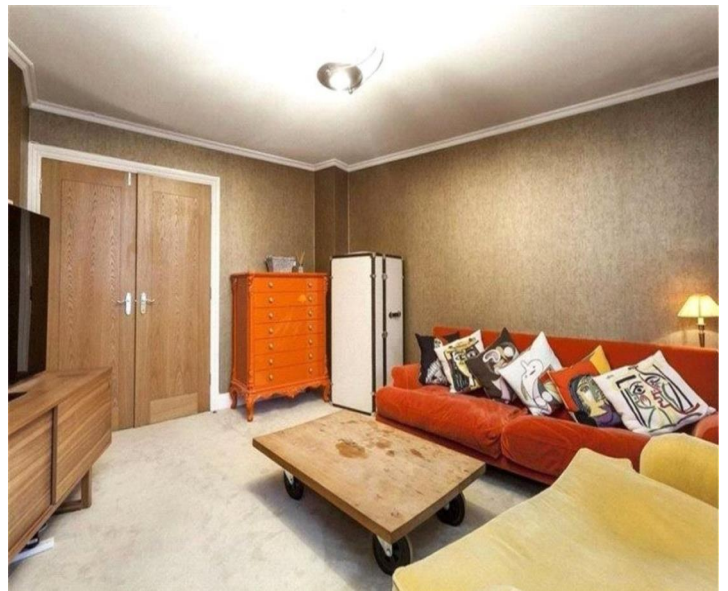
#### The Cloister

106 Great Portland Street, London, W1W 6PF  
T. +44 (0)20 7436 6210 F. +44 (0)20 7436 7261  
E. [info@thecloister.co.uk](mailto:info@thecloister.co.uk) W. [www.thecloister.co.uk](http://www.thecloister.co.uk)  
Head Office, 64 Knightsbridge, London, SW1X 7JF



# PALGRAVE GARDENS, MARYLEBONE

Price on application



## The Cloister

106 Great Portland Street, London, W1W 6PF  
T. +44 (0)20 7436 6210 F. +44 (0)20 7436 7261  
E. [info@thecloister.co.uk](mailto:info@thecloister.co.uk) W. [www.thecloister.co.uk](http://www.thecloister.co.uk)  
Head Office, 64 Knightsbridge, London, SW1X 7JF



# PALGRAVE GARDENS, MARYLEBONE

Price on application

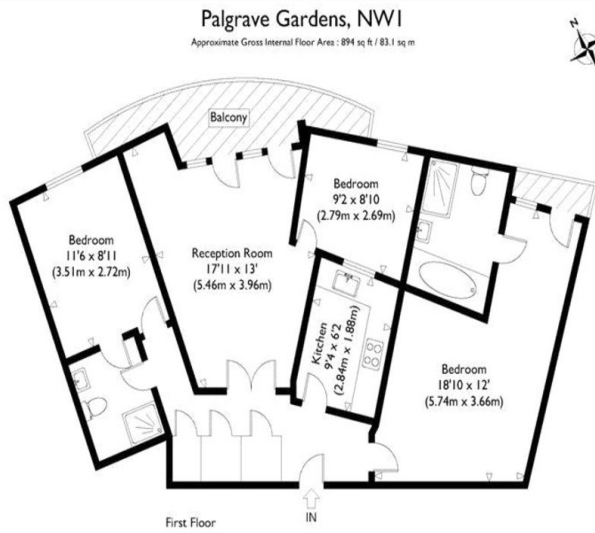


Illustration for identification purposes only, measurements are approximate, not to scale.

## The Cloister

106 Great Portland Street, London, W1W 6PF  
T. +44 (0)20 7436 6210 F. +44 (0)20 7436 7261  
E. [info@thecloister.co.uk](mailto:info@thecloister.co.uk) W. [www.thecloister.co.uk](http://www.thecloister.co.uk)  
Head Office, 64 Knightsbridge, London, SW1X 7JF



# PALGRAVE GARDENS, MARYLEBONE

Price on application

---

## Important Notices:

Particulars: These particulars are not an offer or contract, nor part of one. You should not rely on statements by The Cloister in the particulars or by word of mouth or in writing ("information") as being factually accurate about the property, its condition or its value. Neither The Cloister nor any joint agent has any authority to make any representations about the property, and accordingly any information given is entirely without responsibility on the part of the agents, seller(s), lessor(s) or landlord(s). Any areas, measurements or distances are approximate. The text, photographs and plans are for guidance only and are not necessarily comprehensive. Regulations etc: Any reference to alterations to, or use of, any part of the property does not mean that any necessary planning, building regulations or other consent has been obtained. A buyer, lessee or tenant must find out by inspection or in other ways that these matters have been properly dealt with and that all information is correct. All items usually known as tenant's fixtures and fittings whether mentioned or not in these particulars are excluded from the sale or tenancy but certain items may be available by separate negotiation.

Copy Right: The copyright of all details, photographs and floorplans remain exclusive to The Cloister.

---

## The Cloister

106 Great Portland Street, London, W1W 6PF  
T. +44 (0)20 7436 6210 F. +44 (0)20 7436 7261  
E. [info@thecloister.co.uk](mailto:info@thecloister.co.uk) W. [www.thecloister.co.uk](http://www.thecloister.co.uk)  
Head Office, 64 Knightsbridge, London, SW1X 7JF

